

深圳市金航标电子有限公司

产品规格书

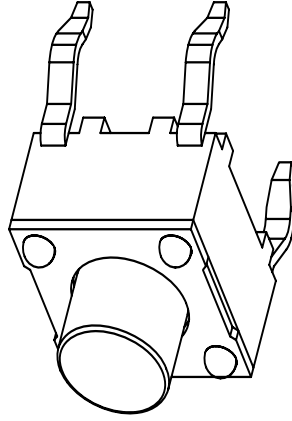
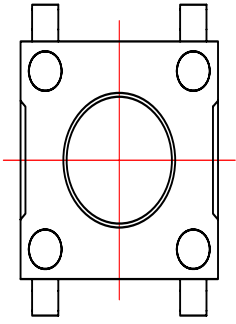
日期：2016年05月28日

产品名称：轻触开关

产品型号：KH-6X6X7H-TJ

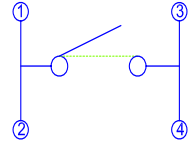
产品规格：6*6*7

Kinghelm®

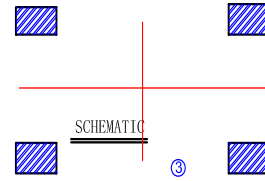


| 序号 | 零件名称 | 材质 |
|----|------|------|
| 1 | 基座 | PA塑料 |
| 2 | 盖板 | 铁皮 |
| 3 | 按子 | 尼龙 |
| 4 | 弹片 | 进口复银 |

SCHEMATIC

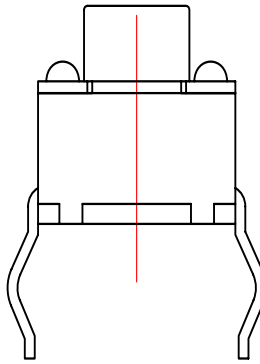
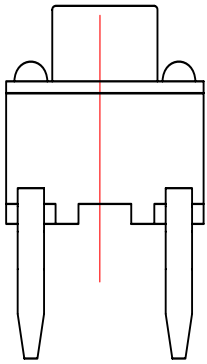


Recommended P.C.B Layout



SCHEMATIC

| | |
|-----|----------|
| 43 | H=4.3mm |
| 50 | H=5.0mm |
| 60 | H=6.0mm |
| 70 | H=7.0mm |
| ... | ... |
| 21 | H=21.0mm |



| 单位 UNIT | mm | 一般公差 GENERAL TOLERANCE | | 型号: KH-6X6X7H-TJ | |
|-----------------------------------|----|---------------------------|------------------------------|------------------|---------------|
| 制图 DRAW | | L<8.8 ±0.2 | 63<L<250 ±0.5 | 名称 NAME | 轻触开关 |
| 设计 DESIGN | | 4<L<16 ±0.3 | 250<L ±0.7 | 型号 Model No. | JF-60 |
| 审核 CHECKED | | 16<L<63 ±0.4 | AS ANGULAR DIMENSION ±0.5 | 料号 Part No. | |
| 标准化 STANDARD | | | | 重量 WT. | |
| 批准 APPROVE | | | | 表面积 SA. | |
| 标记 MARK. | | | | 视角 PROJ. | |
| ECN 编号/变更内容 ECN NO./DEFINITION | | 修改 REVISE | 核准 APPROVE | 日期 DATE | 批准 APPROVE |

比例 SCALE: 版本 REV. A4 SHEET 第2页, 共5页 C图 C DWG

MODEL NO.

产品名称: 轻触开关

ORGANIZER
编制

贺骏驹

AUDITING
审核

赖积任

AUTHORIZE
批准

张松强

1. RATING (额定值) :DC 12V 50mA

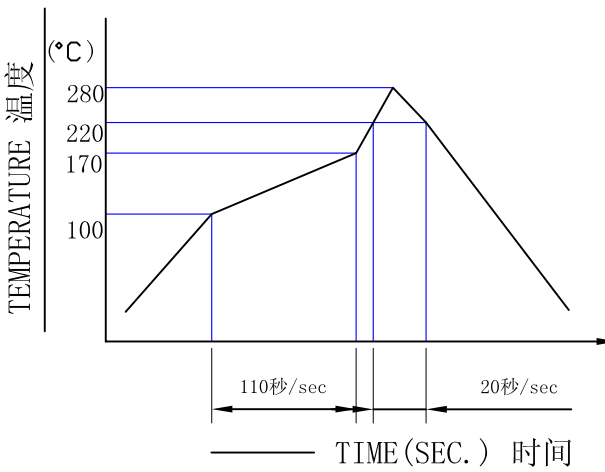
2. ELECTRICAL CHARACTERISTICS (电气性能规格):

| ITEM 项目 | TEST CONDITIONS 测试条件 | PERFORMANCE 规格 |
|--------------------------------------|---|--|
| 2.1 CONTACT RESISTANCE 接触电阻 | MEASURED AT SMALL CURRENT (100 mA OR LESS) 在微小电流 (100mA) 以下测试。 | 30m Ω MAX 30毫欧以下。 |
| 2.2 INSULATION RESISTANCE 绝缘电阻 | APPLY A VOLTAGE OF 100V DC FOR 1 MIN, TO FOLLOWING PORTIONS AFTER WHICH MEASUREMENT SHALL BE MADE. (1) BETWEEN BODY AND CONDUCTOR (2) BETWEEN CONDUCTORS NOT TO BE CONTACT. 输入100V DC 电压1分钟, 按以下接触方法测试: (1) 接触端子之间 (2) 胶座与排脚之间 | 100M Ω MIN 100兆欧以上 |
| 2.3 DIELECTRIC STRENGTH 耐电压 | AC 250V (50-60Hz) FOR 1 MIN TRIP CURRENT: 0.5mA (1) BETWEEN TERMINALS. (2) BETWEEN INDIVIDUAL TERMINALS AND FRAME. 输入AC 250V (50-60Hz) 电压, 1分钟电流为0.5mA, 按以下接触方式测试 (1) 排脚相互之间 (2) 排脚与外壳之间 | WITHOUT DAMAGE TO PARTS ARCING OR BREAKDOWN ETC. 没有绝缘破坏等异常。 |

3. MECHANICAL CHARACTERISTICS (机械性能规格)

| ITEM 项目 | TEST CONDITIONS 测试条件 | PERFORMANCE 规格 |
|---|--|---|
| 3.1 OPERATING FORCE 操作力 | | PAY ONE'S RESPECTS TO THIRDLU PAGE 参见第5页 |
| 3.2 TERMINAL STRENGTH 端子强度 | A STATIC LOAD OF (150gf) SHALL BE APPLIED TO THE TIP OF THE TERMINAL FOR 1 MIN IN ANY DIRECTION 在任意一个方向的先端加上 (150gf) 力度测试, 时 间1分钟。 | ELECTRICAL CHARACTER ISTICS SHALL BE SATISFIED WITHOUT DAMAGE OR EXCESSIVE LOOSENESS OF ACTUATOR 端子没有裂开、松动 等异常, 满足机械、 电性能要求 |
| 3.3 PRACTICAL TEMPERATURE RANGE 使用温度范围 | | -25° C~+70° C 在-25°C~+70°C 温度内使用 |

| | | | |
|------------------------------|---|---|--|
| Kinghelm [®] | | DOCUMENT NUMBER 文件编号 | |
| | | DATE 日期 | 2016年05月28日 |
| SPECIFICATION 规格书 | | PAGE 页数 | 共 5 页 第 4 页 |
| | ITEM 项目 | TEST CONDITIONS 测试条件 | PERFORMANCE 规格 |
| 3.4 | STANDARD ATMOSPHERIC CONDITIONS 测试标准状态 | UNLESS OTHERWISE SPECIFIED, THE STANDARD RANGE OF ATMOSPHERIC CONDITIONS FOR MAKING MEASUREMENTS AND TESTS ARE AS FOLLOWS: (1) AMBIENT TEMPERATURE: 5°C TO 35°C (2) RELATIVE HUMIDITY: 45% TO 85% (3) AIR PRESSURE : 80Kpa TO 106Kpa 在没有指定的情况下测试温度、湿度、气压如下: (1) 温度为5°C~35°C (2) 湿度为45%~85% (3) 气压为80Kpa~106Kpa | |
| 4. DURABILITY (耐久性): | | | |
| 4.1 | LIFE TEST 寿命试验 | WITHOUT LOAD: AN ACTUATOR SHALL BE SUBJECT TO 100,000 CYCLES AT A SPEED OF 20 CYCLES FOR 1 MIN. 无负荷: 操作者以每分钟20次的频率作100,000回无负荷测试 | (1) CONTACT RESISTANCE SHALL BE 200mΩ MAX (2) MECHANICAL AND ELECTRICAL CHARACTERISTICS SHALL BE SATISFIED. (1) 接触电阻不能超过200mΩ (2) 其它因满足机械、电性能要求 |
| 4.2 | HEAT TEST 耐热试验 | THE SWITCH SHALL BE STORED AT A TEMPERATURE OF 85±2°C FOR 96 HOURS . AND THEN IT SHALL BE SUBJECTED TO THE CONTROLLED RECOVERY CONDITIONS FOR 1 HOUR AFTER WHICH MEASUREMENT SHALL BE MADE. 放置在温度85°C中测试96小时后,再放置正常室温中1小时后测定 | THERE SHALL BE NO DAMAGE ON APPEARANCE. MECHANICAL AND ELECTRICAL CHARACTERISTICS SHALL BE SATISFIED. 外观无异常,满足机械、电性能要求 |
| 4.3 | COLD TEST 耐冷试验 | THE SWITCH SHALL BE STORED AT A TEMPERATURE OF -25±3°C FOR 96 HOURS . AND THEN IT SHALL BE SUBJECTED TO THE CONTROLLED RECOVER CONDITIONS FOR 1 HOURS AFTER WHICH MEASUREMENT SHALL BE MADE. 放置在温度-25±3°C中96小时,再放置常温中1小时后测定。 | THERE SHALL BE NO DEFORMATION OR CRACKS IN MOLDED PART. 外观无异常,满足机械、电性能要求 |
| 4.4 | HOMIDITY TEST 潮湿试验 | THE SWITCH SHALL BE STORED AT A TEMPERATURE OF 40±2°C AND A HUMIFITY OF 90% TO 96% FOR 96 HOURS . THEN THE SWITCH SHALL BE MAINTAINED AT STANDARD ATMOSPHERIC CONDITION FOR 1 HR FOR OTHER PROCEDURES BE MADE. 放置40±2°C相对湿度为90~96%环境中96小时后,再放置常温中1小时后测定。 | |

| | ITEM 项目 | TEST CONDITIONS 测试条件 | PERFORMANCE 规格 |
|-----|--------------------------------------|---|--|
| 4.5 | <p>SOLDERING CONDITIONS 焊锡条件</p> | <p>HAND SOLDERING: (1) DEVICE: SOLDER IRON A. 350°C MAX . 3SEC MAX B. 270°C MAX . 5SEC MAX (2) REFLOW SOLDERING 手焊 (1) 工具: 烙铁 A. 350°C MAX . 3SEC MAX 不能对焊脚加压 B. 270°C MAX . 5SEC MAX (2) 回流焊</p>  | <p>THERE SHALL BE NO DEFORMATION OR CRACKS IN MOLDED PART. 外观无异常, 满足机械、电性能要求</p> |

| OPERATING FORCE 操作力 | |
|---------------------|--|
| 260 ± 30gf | |
| | |
| | |