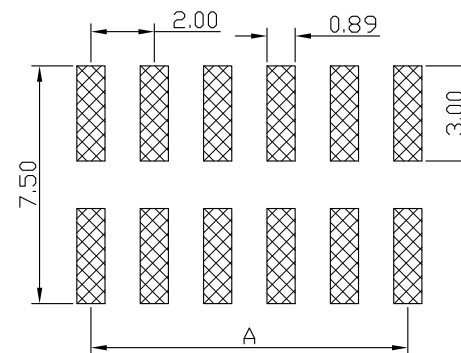
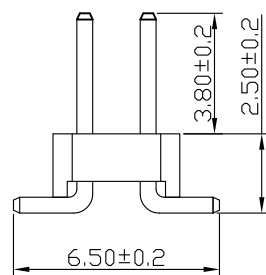
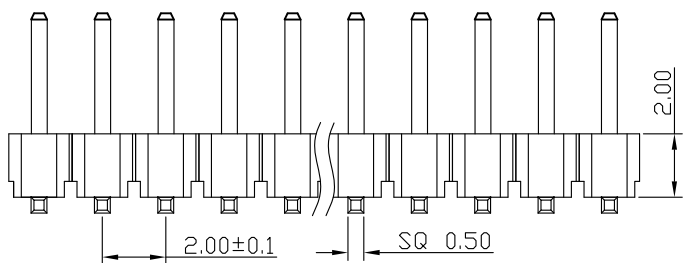




### SPECIFICATIONS

Current Rating: 1.5 Amps  
 Insulation Resistance: 1000M Ω Min  
 Contact Resistance: 20mΩ Max  
 Withstanding Voltage: AC 500V  
 Operation Temperature: -40° to+105°  
 Contact Material: Brass  
 Standard: PA6T  
 Insulator Material: Polyester (UL 94V-0)  
 Contact Plating: Gold Flash  
 Max. Processing Temp: 240° C for 30-60seconds  
 (260° C for 5seconds)



RECOMMEND P. C. B LAYOUT  
 PCB TOLERANCE: ±0.05 (TOP VIEW)

深圳市金航标电子有限公司

www.kinghelm.com.cn

KH-2.0PH-2X21P-L8.0-SMT

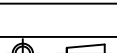
0755-28190160

UNLESS OTHERWISE SPECIFIED TOLERANCE

X : ±0.30 X° : ±5°  
 X.X : ±0.25 X.X° : ±1°  
 X.XX : ±0.20 X.XX° : ±0.5°

DRAWN NAME: 2.0PH H2.0 2xnPin SMT PC6.5 PA3.8 PB2.5 L8.0 6T

|      |    |       |     |            |
|------|----|-------|-----|------------|
| SIZE | A4 | SCALE | N:1 | PROUCT NO. |
| REV  | A  | UNIT  | mm  | PROJECT    |



PAGE 1/1

CHECKED: 陈超凡 2022/04/24

CHECKED: / / APPROVED: / /

| No. of | DIM. A | DIM. B | No. of | DIM. A | DIM. B | No. of | DIM. A | DIM. B | No. of | DIM. A | DIM. B |
|--------|--------|--------|--------|--------|--------|--------|--------|--------|--------|--------|--------|
| 1      | 0.00   | 2.00   | 11     | 20.00  | 22.00  | 21     | 40.00  | 42.00  | 31     | 60.00  | 62.00  |
| 2      | 2.00   | 4.00   | 12     | 22.00  | 24.00  | 22     | 42.00  | 44.00  | 32     | 62.00  | 64.00  |
| 3      | 4.00   | 6.00   | 13     | 24.00  | 26.00  | 23     | 44.00  | 46.00  | 33     | 64.00  | 66.00  |
| 4      | 6.00   | 8.00   | 14     | 26.00  | 28.00  | 24     | 46.00  | 48.00  | 34     | 66.00  | 68.00  |
| 5      | 8.00   | 10.00  | 15     | 28.00  | 30.00  | 25     | 48.00  | 50.00  | 35     | 68.00  | 70.00  |
| 6      | 10.00  | 12.00  | 16     | 30.00  | 32.00  | 26     | 50.00  | 52.00  | 36     | 70.00  | 72.00  |
| 7      | 12.00  | 14.00  | 17     | 32.00  | 34.00  | 27     | 52.00  | 54.00  | 37     | 72.00  | 74.00  |
| 8      | 14.00  | 16.00  | 18     | 34.00  | 36.00  | 28     | 54.00  | 56.00  | 38     | 74.00  | 76.00  |
| 9      | 16.00  | 18.00  | 19     | 36.00  | 38.00  | 29     | 56.00  | 58.00  | 39     | 76.00  | 78.00  |
| 10     | 18.00  | 20.00  | 20     | 38.00  | 40.00  | 30     | 58.00  | 60.00  | 40     | 78.00  | 80.00  |