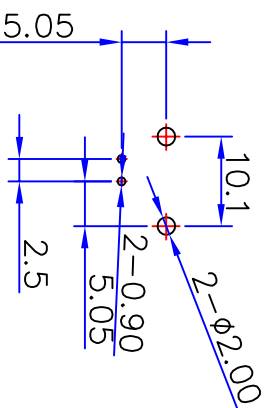
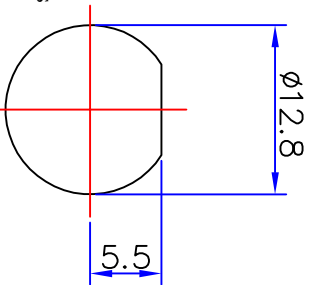
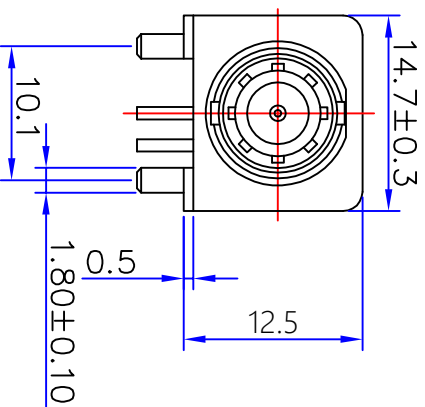
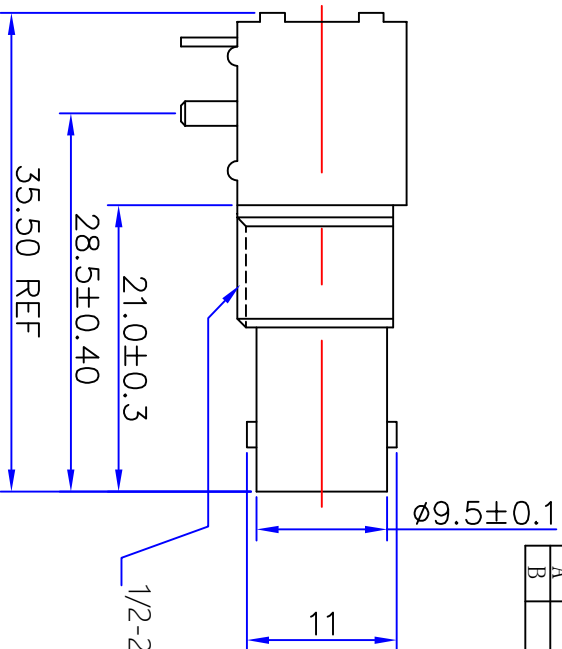
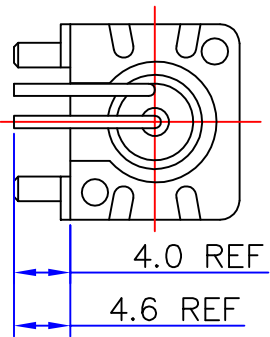




# Kinghelm®



### Specifications

Impedance: 75 Ohms  
 Frequency Range: DC~3G  
 VSWR: 1.3MAX  
 Working Voltage: 500V rms @ sea level  
 Insulation Resistance: 5000 Ohms min  
 Temperature Range: -55°C T0 +155°C  
 Relative Temperature: ≤95% (40° C±2° C)  
 Drawings products are in line with ROHS standards

1	Body	Zinc	NI:80-120u"
2	Center contact	Brass	AU:1u"
3	Lead	Iron	AU:1u"
4	Fixed footrest	Iron	NI:80-120u"
5	Insulator	POM	White
6	Fixed mount	PBT	White
7	Washer	Brass	NI:80-120u"
8	Hex nut	Brass	NI:80-120u"
9			
10			
NO	Component Number	Material	Finish

NOTE:

DRAWN: 贺接驹  
 CHECKED: 赖积任  
 APPROVALS: 张松强

Tolerance	0-6 6-30 30-120 Angular	±0.20 ±0.30 ±0.5 ±2°
View		
UNIT		MM

深圳市金航标电子有限公司 WWW.BDS666.COM  
 KH-BNC75-3511 0755-83044319  
 Name: BMC WHITE JACK CONNECTOR (12.5MM)

DATE	2012/11/02	CAD FILE	DOSIN-801-0039	SHEET	1 OF 1
REV	A	Product NO.	DOSIN-801-0039		
DATE	2012/11/02	CAD FILE	D/company drawings/BD		

Product NO.

DOSIN-801-0039

REV	DESCRIPTION	DWN	DATE	APPROVEN
A	First Issue	JIM	2012/11/02	John King
B	尺寸调整	W.cheng	2020/05/05	John King